

**Charting** is the method we use to record every surface of the tooth so we can detail the extent of any damage, decay or fillings.

It will show:

The teeth that are present in the mouth

The teeth that are missing

Treatment required

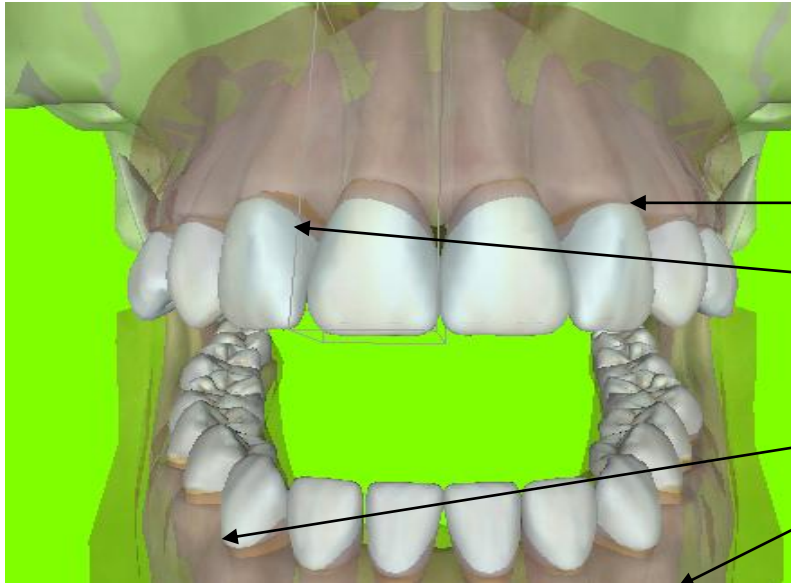
Treatment completed

There are two methods of charting:

Method 1 divides the mouth into 4 parts or quadrants.

Method 2 gives each tooth a number (FDI)

### Method 1



There are 16 permanent teeth in each jaw. We divide the mouth into quarters or quadrants.

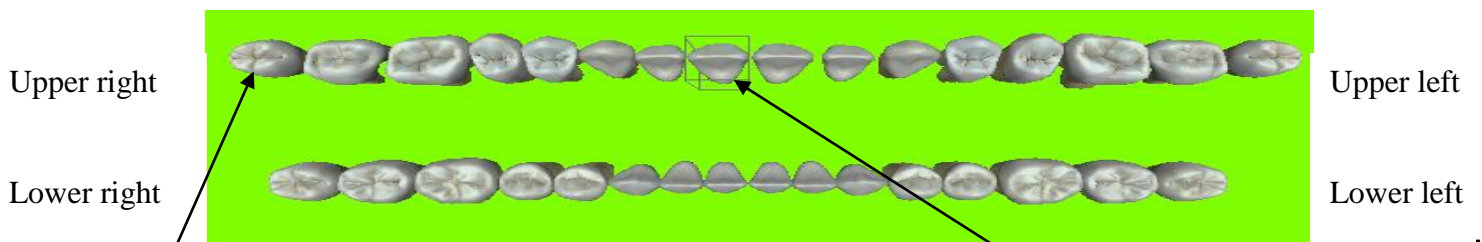
Upper left quadrant

Upper right quadrant

Lower right quadrant

Lower left quadrant

If you imagine opening the jaws completely and stretching the teeth in a straight line so we can look at the biting surface it would look just like the picture below.



We now number the teeth from 1 to 8 starting in from the centre. This tooth is the upper right one or UR1 or 1  
 This tooth is upper right eight or UR8 or 8

### Method 2

#### FDI charting system

18	17	16	15	14	13	12	11	21	22	23	24	25	26	27	28		
48	47	46	45	44	43	42	41	31	32	33	34	35	36	37	38		
				55	54	53	52	51	61	62	63	64	65				
				85	84	83	82	81	71	72	73	74	75				