

Equipment and instruments for the restoration of teeth



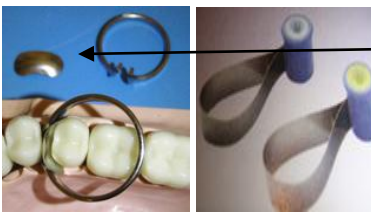
Matrix retainers and bands are used to form the original shape of the tooth where part of the tooth is missing due to decay or fracture.

The retainers may be disposable or stainless steel and they may have plastic or metal bands that can be tightened to give a close fit around the tooth. It is very important to get a very tight fit around the tooth so the filling material does not squeeze out.



The bands for a siqueland retainer may be wide or narrow.

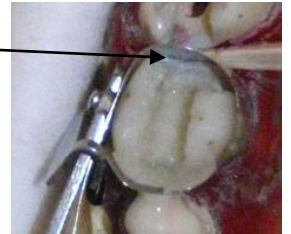
For Toffelmire they come in different shapes to allow for deep boxes in molar teeth



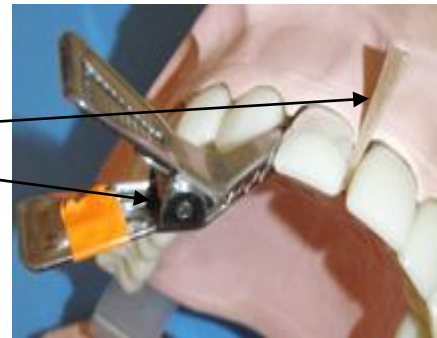
There can be sectional matrix bands. These have a plastic screw to keep them in place to save space in the mouth



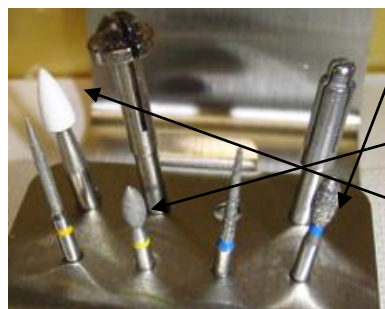
Wedges must be used to ensure a tight fit



For anterior teeth clear strips are used to form the shape of the tooth. They need to be clear to allow the light to cure the composite. Wedges must be used to ensure a good shape. Clips can be used to hold the matrix strip.



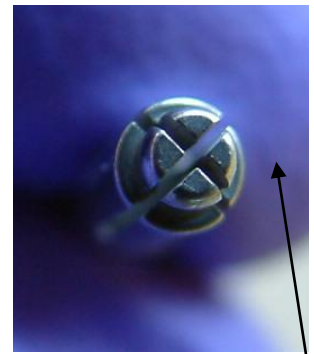
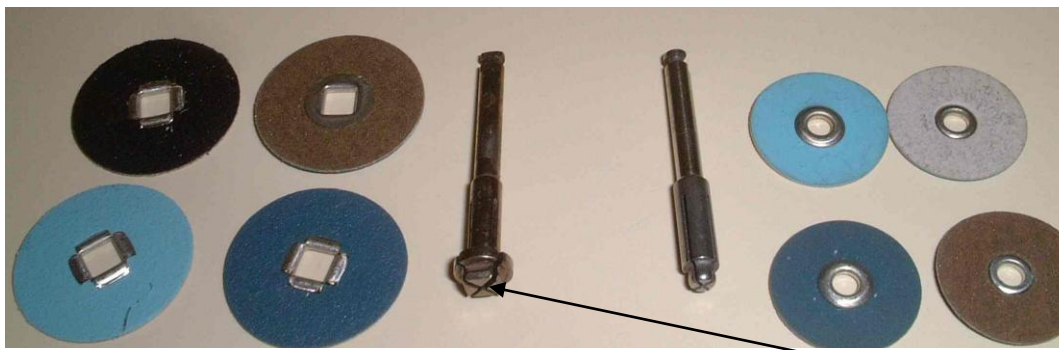
To shape and finish a filling there is a wide selection of burs and materials. Many manufacturers produce special kits with a selection of burs to finish and polish a white filling.



The blue band diamond burs shape the filling.
The yellow diamond burs are much finer and finish the shape.
White stones or polishing discs can be used for the final finish.



Boxes of finishing strips and abrasive discs are often used to ensure a smooth finish and final polish of composite fillings. These polishing discs are good because they do not have a metal centre which might leave a mark on the composite filling.



These finishing discs come in various sizes and they vary from very course to super fine for polishing. The dentist may start with the course to help shape and finish the edges of the filling going through different sizes until the very fine is making the composite shine.

The larger discs use a "moore's" mandrel with a square centre to control the disc.

The smaller discs use a "pop-on" mandrel with a round centre.



To ensure a good smooth finish of composite between the teeth finishing strips are used.

Metal strips will help to remove extra composite where a bur cannot reach.

Strip rolls of abrasive material come as course to very fine to ensure a good finish between the teeth.